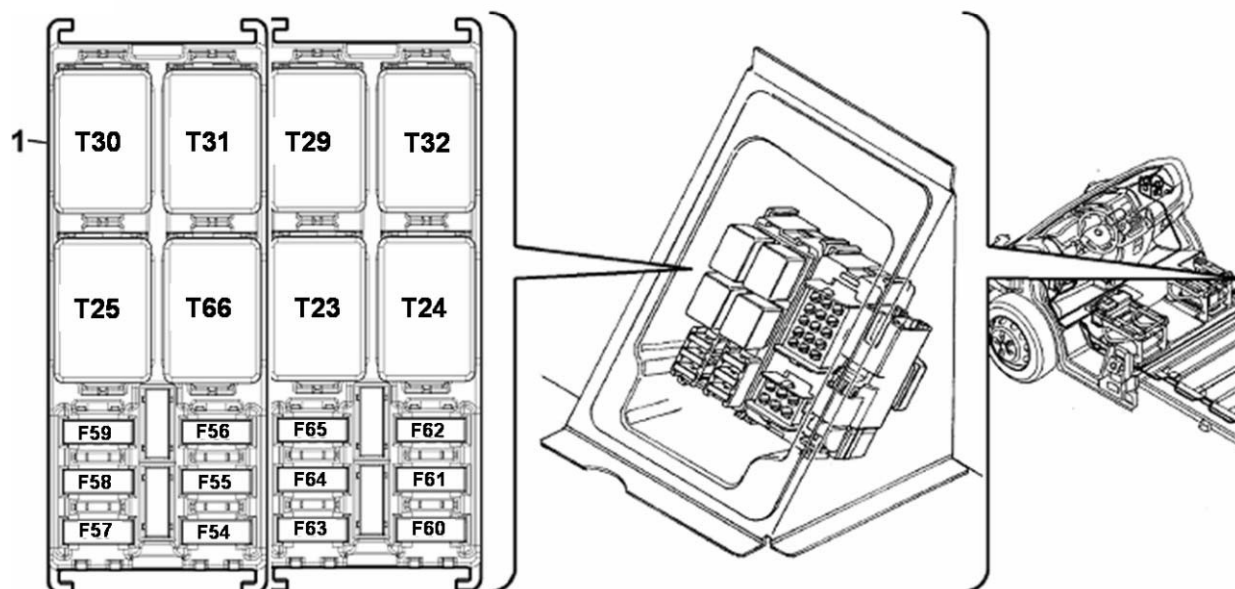


**CCO optional wired control unit**

The CCO control unit (1) can be present in one or two modules, depending on the opt on the vehicle.  
One of the two modules can be replaced by the opt. socket for body-makers, as described in the following 0.2sections.



Code	Use on module 1	I [A]	Code	Use on module 2	I [A]
<b>FUSES</b>					
F54	Not present	15	F60	Spare	
F55	Heated seats	15	F61	Spare	
F56	People carrier rear socket 12V	15	F62	Spare	
F57	Supplementary heater under seat	10	F63	+30 rear supplementary heater protection	30
F58	Not present	-	F64	Spare	
F59	+30 NMA (NO. air springs)	20	F65	Supplementary heater fan	30
<b>CONTACTORS</b>					
T25	Minibus internal lights	30	T23	INT/A supplementary heater fan	
T30	Not present	-	T29	Supplementary climate control unit enable	
T31	Supplementary heater under seat	30	T32	Spare	
T66	+Key for heated seats	30	T24	switch discharge (refrigerator, heated seats, climate control fan speed 1)	



**Prearrangement for body-makers****Alternators and supplementary batteries**

The installation of electrical appliances with a high input (e.g., electric motors used frequently or motors used less frequently but for long periods and without using the vehicle's engine, such as tail lifts for town use) or a large number of supplementary electrical appliances can require power outputs that the vehicle's normal system is not able to deliver. In these cases it is necessary to use supplementary batteries of suitable capacity and an uprated alternator.

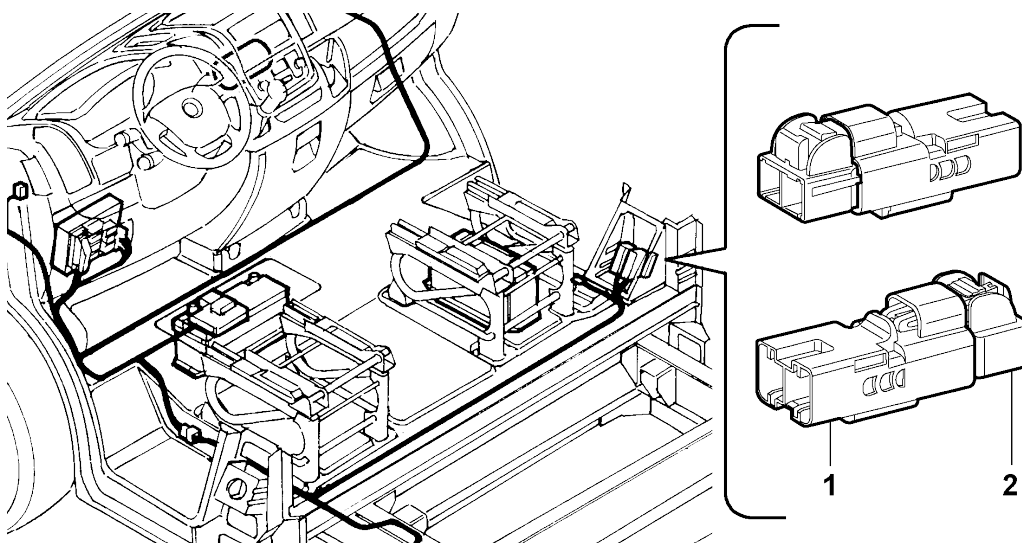
The application of supplementary appliances must include suitable protection and must not overload the vehicle's system.

If it is necessary to use batteries with a greater capacity, because of additional loads, check that the vehicle is equipped with an uprated alternator.

In any case it is recommended not to exaggerate in increasing the battery capacity by over 20-30% of the maximum values supplied as optionals so as not to damage any components in the system.

**Supplementary Alternator**

The use of an uprated alternator is contemplated with the following characteristics:

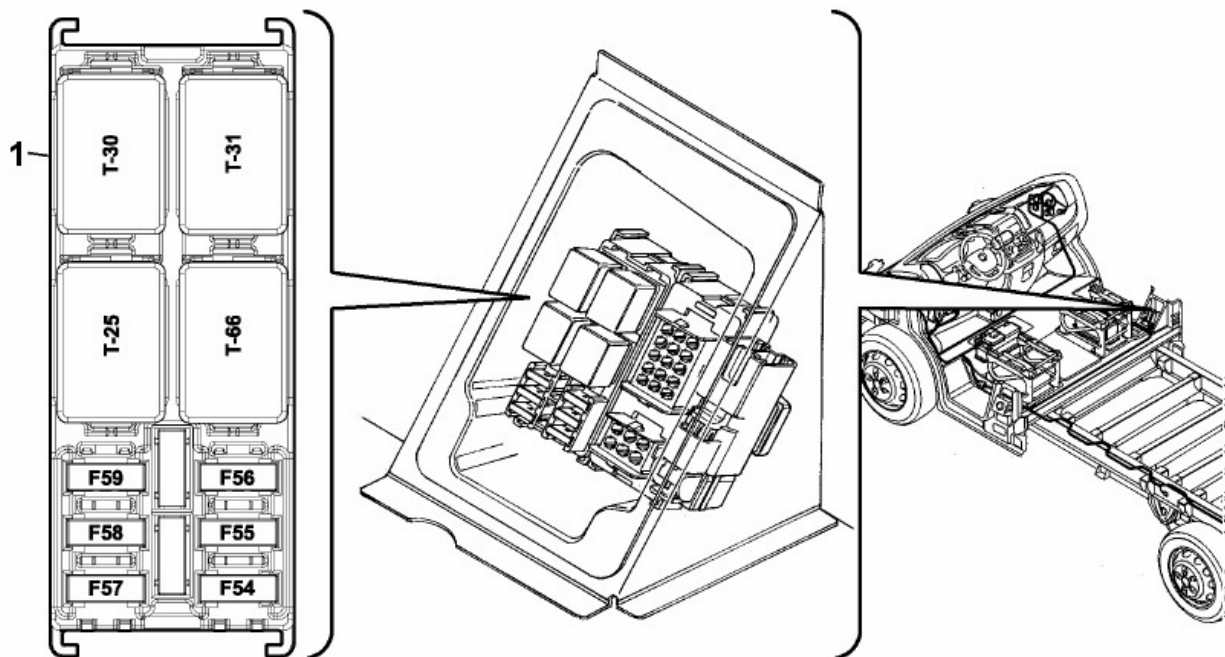
**Auxiliary battery****85A – 160A 14V**

Pin	Function/Part number Connector	Minimum cable cross-section [mm <sup>2</sup> ]	cable colour	Notes
	<b>MTA 2-way connector p/n 45.40300</b> <b>Counterpart: MTA p/n 45.40400</b>			Reference on diagram C036-L1C
1	Power supply +30	10	R	Nominal current fuse 50A
2	Power ground	10	N	Max continuous current 53A



**Fuse and contactor box for optionals on right-hand pillar (CCO)**

The opt prearrangement is installed in place of the right-hand module of the optional wired control unit, as shown in the figure. If the two modules of the optional wired control unit are both used, depending on the contemplated versions, the opt socket for body-makers is located in the area above the two modules. The contactors and fuses of the CCO are the same ones shown above.

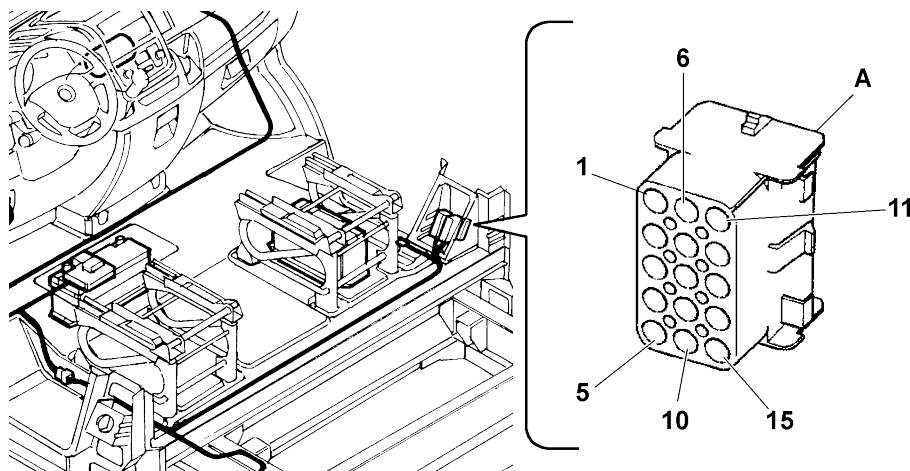


For the pinout, see module 1 in the CCO optional wired control unit section.



**Opt socket for body-makers (Opt 081)**

This prearrangement allows body-makers to connect accessories and specific devices for the vehicle's electrical system without altering operation.

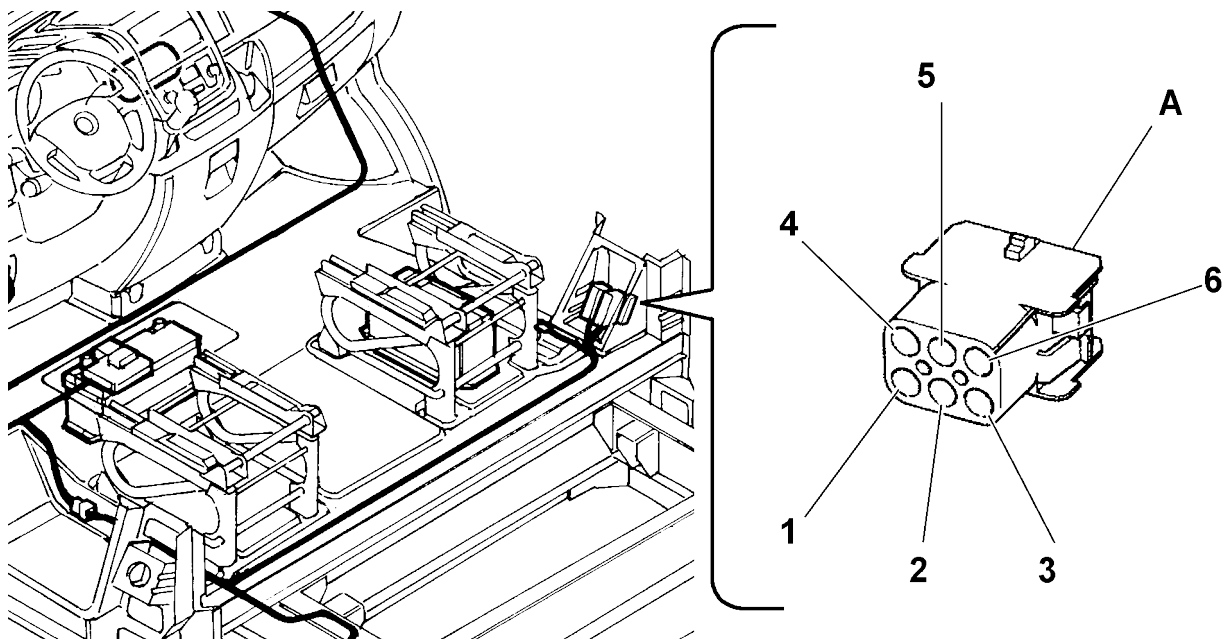


Pin	Function/Part number Connector	m cable cross-section	2 cable colour	Notes
	<b>Tyco 15-way connector p/n 0-926647-1</b> <b>Counterpart: Tyco p/n 1-480710-0 (by the body-maker)</b>			Reference on diagram C036-L1A
1	Supplementary brake light	0,5	B	$P_{MAX} = 21W$ at 12V (to use as an alternative to the one on Y203L4A)
2	D+ (active to ground)	0,5	MB	$I_{MAX} = 300mA$ (1 relay coil FIAT Auto standard)
3	Vehicle speed repetition (VSO)	0,5	GR	$I_{MAX} = 5mA$ (see Figure 27)
4	Lock command	1,5	RN	$I_{MAX} = 12A$ (For the actuation times see Table 1)
5	Unlock command	1,5	NR	$I_{MAX} = 12A$ (For the actuation times see Table 1)
6	Lateral and rear door status signal	0,5	NZ	Use a normally open (N.O.) switch to ground (minimum clean contact current 10 mA)
7	Driver 20W SBMT timed power supply for ceiling lights	0,5	RV	Ceiling light timed power supply (+) for 15 min. with key off ( $P_{MAX} = 20W$ at 12V)
8	Ceiling light negative command (dimmered)	0,5	BV	Ceiling light command (-) $P_{MAX} = 20W$ at 12V
9	B-CAN Low	0,35	BS	Prearrangement for FIAT Auto accessories line anti-theft <sup>(1)</sup>
10	B-CAN High	0,35	NS	Prearrangement for FIAT Auto accessories line anti-theft <sup>(1)</sup>
11	Relay negative command for side parking lights (sidemarker)	0,5	Z	$I_{MAX} = 300 mA$ (1 relay coil FIAT Auto standard)
12	A/C request	0,5	GV	Air-conditioning cut-in positive signal $I_{MAX} = 300 mA$ (1 relay coil FIAT Auto standard)



13	Power supply with key on (+KEY)	0,5	L	I <sub>max</sub> =600 mA (2 relay coils FIAT Auto standard)
14	Supplementary heater command.	-	-	I <sub>MAX</sub> = 300 mA (1 relay coil FIAT Auto standard)
15	Not connected	-	-	-

### Prearrangement for rear speakers



Pin	Function/Part number Connector	cable cross-section	cable colour	Notes
	<b>Tyco 6-way connector p/n 1-480705-0</b> <b>Counterpart: Tyco p/n 1-480704-0 (by the body-maker)</b>			Reference on diagram C036-L1B
1	Permanent 12V power supply (+30) for car radio	1,5	RG	Auxiliary battery permanent power supply to car radio cable only present from C036-L1A to Y028L1A <sup>(1)</sup>
2	Rear speaker LH +	1	V	
3	Rear speaker LH -	1	VN	
4	Rear speaker RH +	1	HN	
5	Rear speaker RH -	1	H	
6	Not connected	-		

