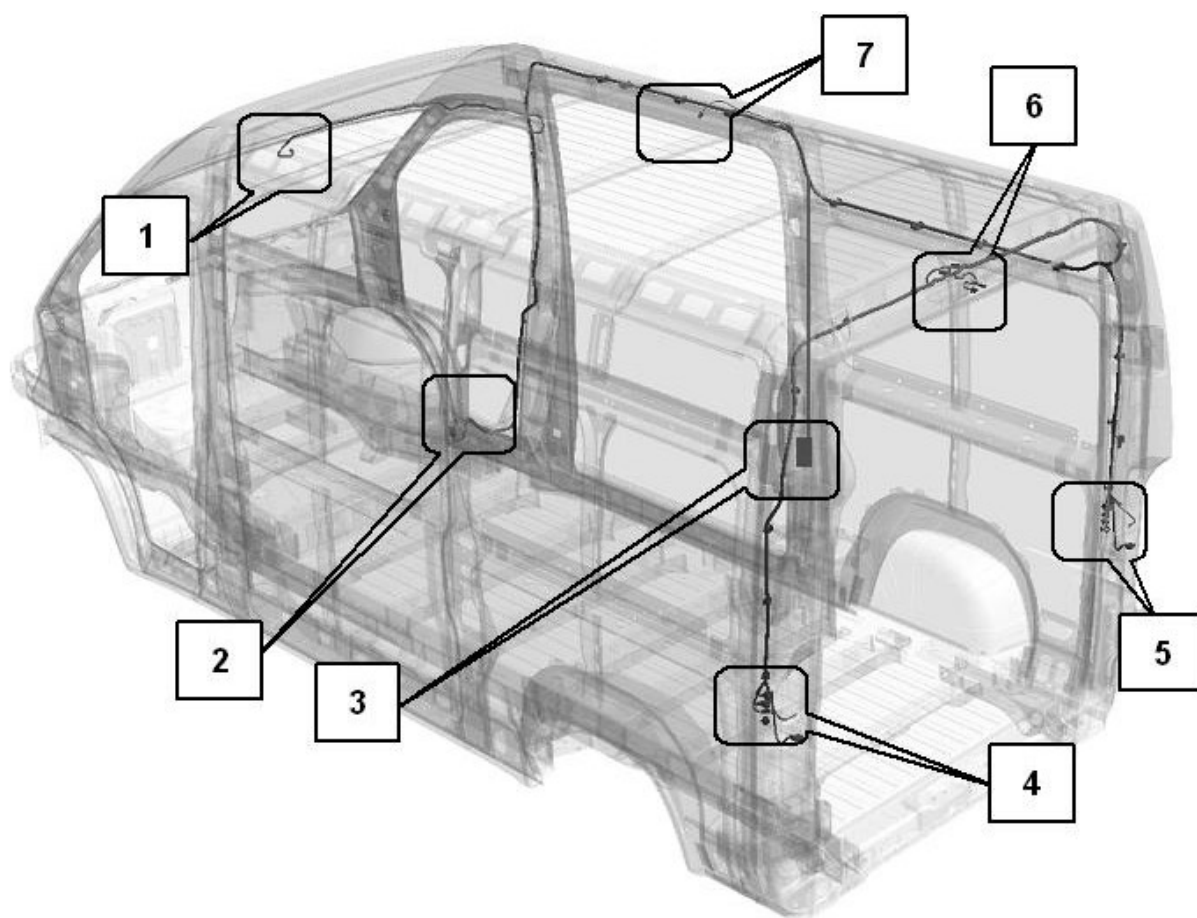


Rear right wiring**Legend:**

- 1 - Connectors for front ceiling light and rear video camera viewer (opt).
- 2 - Rear wiring isolating connectors.
- 3 - Connector for left side sliding door lock.
- 4 - Connectors for rear left light cluster.
- 5 - Connectors for rear right light cluster and prearrangement.....
- 6 - Connectors for rear ceiling light, third brake light and rear video camera (opt).
- 7 - Connector for side ceiling light.

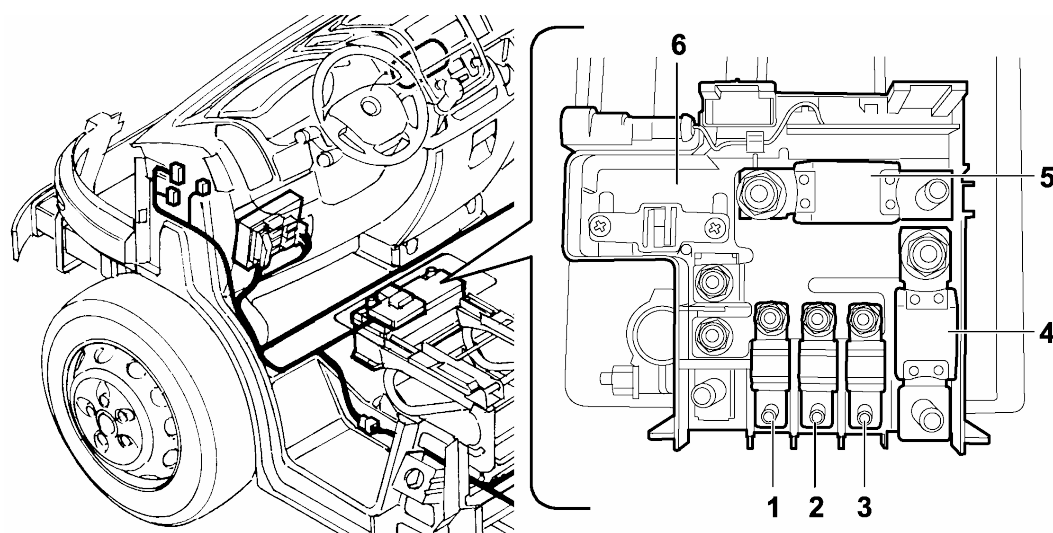


Fuse box on battery and engine compartment control unit**Fuse box on battery**

On the vehicle's standard battery there is an interconnecting unit on which there is also a power tap for a supplementary battery.

The connection for the body-makers is the fuse (3) of 50A.

The interconnected cable is comprehensive of the two-way connector located in the compartment at the bottom of the right-hand pillar

**Legend and description of connections:**

- 1 - main power supply for fuse control unit and relay under dashboard CPL (80 A)
- 2 - secondary power supply for fuse control unit and relay under dashboard CPL (70 A)
- 3 - power supply for a supplementary battery (50 A) via 2-way connector
- 4 - power supply for fuse control unit and relay in the engine compartment CVM (150 A)
- 5 - power supply for starter motor and alternator
- 6 - interconnecting box on battery.

