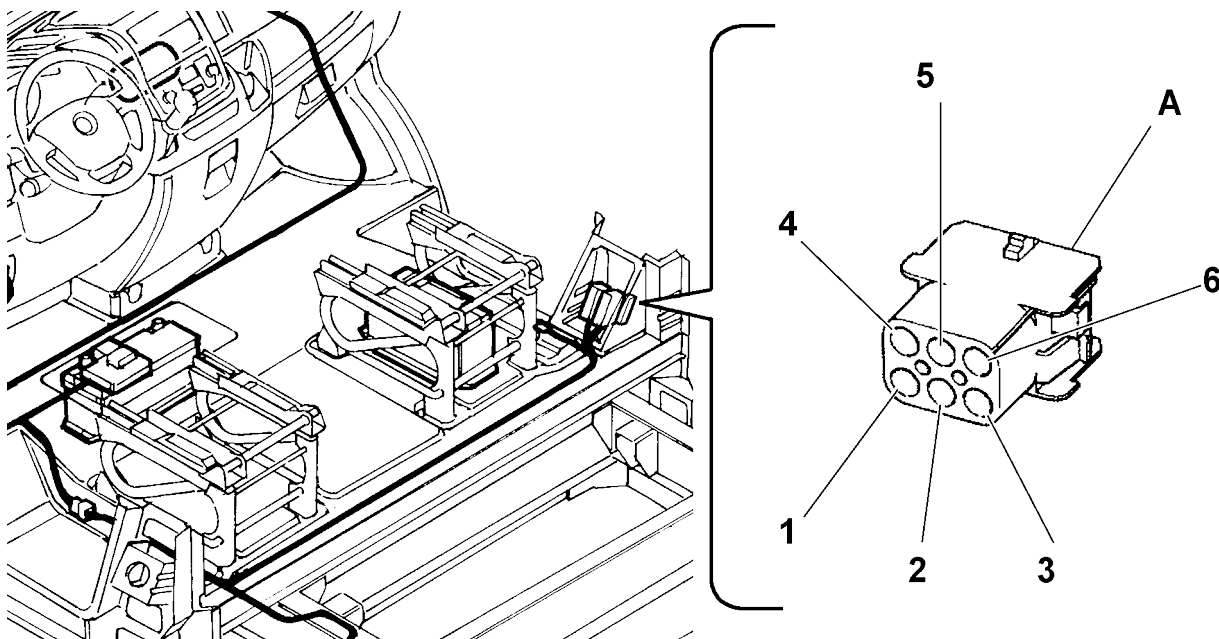


13	Power supply with key on (+KEY)	0,5	L	I <sub>max</sub> =600 mA (2 relay coils FIAT Auto standard)
14	Supplementary heater command.	-	-	I <sub>MAX</sub> = 300 mA (1 relay coil FIAT Auto standard)
15	Not connected	-	-	-

### Prearrangement for rear speakers



Pin	Function/Part number Connector	cable cross-section	cable colour	Notes
	<b>Tyco 6-way connector p/n 1-480705-0</b> <b>Counterpart: Tyco p/n 1-480704-0 (by the body-maker)</b>			Reference on diagram C036-L1B
1	Permanent 12V power supply (+30) for car radio	1,5	RG	Auxiliary battery permanent power supply to car radio cable only present from C036-L1A to Y028L1A <sup>(1)</sup>
2	Rear speaker LH +	1	V	
3	Rear speaker LH -	1	VN	
4	Rear speaker RH +	1	HN	
5	Rear speaker RH -	1	H	
6	Not connected	-		

