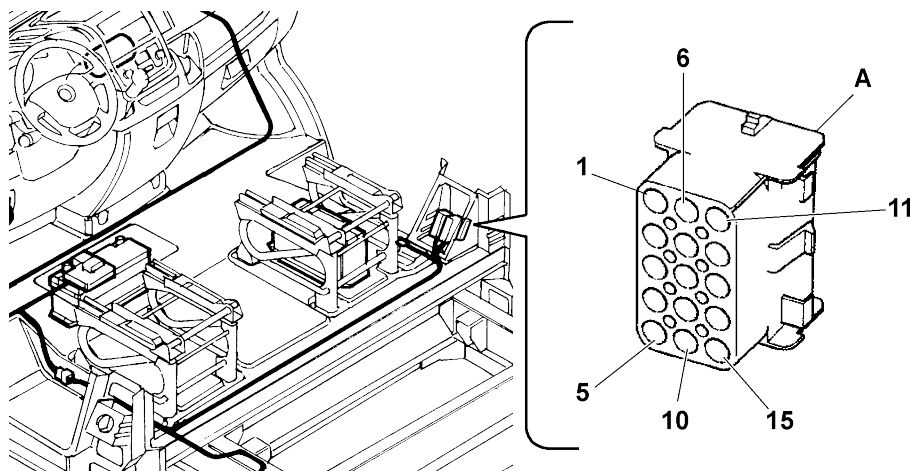


Opt socket for body-makers (Opt 081)

This prearrangement allows body-makers to connect accessories and specific devices for the vehicle's electrical system without altering operation.



Pin	Function/Part number Connector	m cable cross-section	2 cable colour	Notes
	Tyco 15-way connector p/n 0-926647-1 Counterpart: Tyco p/n 1-480710-0 (by the body-maker)			Reference on diagram C036-L1A
1	Supplementary brake light	0,5	B	$P_{MAX} = 21W$ at 12V (to use as an alternative to the one on Y203L4A)
2	D+ (active to ground)	0,5	MB	$I_{MAX} = 300mA$ (1 relay coil FIAT Auto standard)
3	Vehicle speed repetition (VSO)	0,5	GR	$I_{MAX} = 5mA$ (see Figure 27)
4	Lock command	1,5	RN	$I_{MAX} = 12A$ (For the actuation times see Table 1)
5	Unlock command	1,5	NR	$I_{MAX} = 12A$ (For the actuation times see Table 1)
6	Lateral and rear door status signal	0,5	NZ	Use a normally open (N.O.) switch to ground (minimum clean contact current 10 mA)
7	Driver 20W SBMT timed power supply for ceiling lights	0,5	RV	Ceiling light timed power supply (+) for 15 min. with key off ($P_{MAX} = 20W$ at 12V)
8	Ceiling light negative command (dimmered)	0,5	BV	Ceiling light command (-) $P_{MAX} = 20W$ at 12V
9	B-CAN Low	0,35	BS	Prearrangement for FIAT Auto accessories line anti-theft ⁽¹⁾
10	B-CAN High	0,35	NS	Prearrangement for FIAT Auto accessories line anti-theft ⁽¹⁾
11	Relay negative command for side parking lights (sidemarker)	0,5	Z	$I_{MAX} = 300 mA$ (1 relay coil FIAT Auto standard)
12	A/C request	0,5	GV	Air-conditioning cut-in positive signal $I_{MAX} = 300 mA$ (1 relay coil FIAT Auto standard)

