

# Temperature – WTS05

NTC Weber Temperature Sensor - Automotive



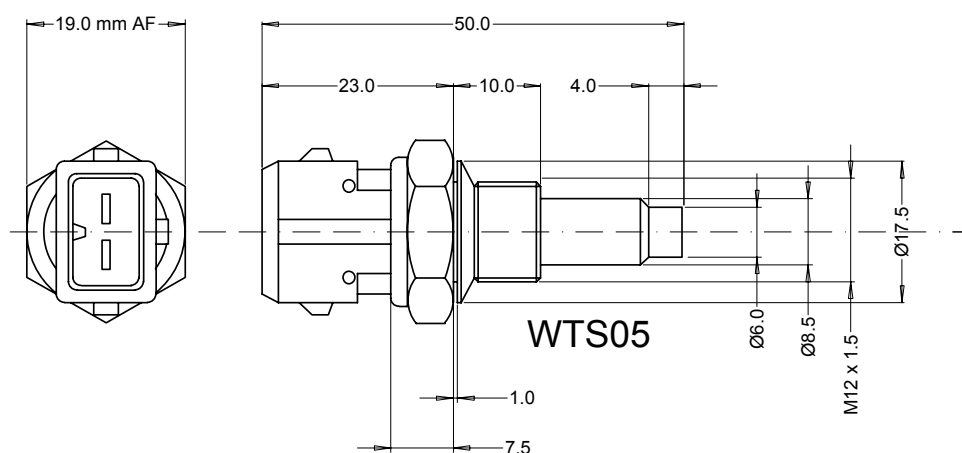
## Description

The WTS05 is an analogue sensor with a temperature dependant resistor providing a variable resistance across the 2 contacts. Signal is negative temperature coefficient (NTC).

Active device is a thermistor fitted coated leads in a hermetically sealed brass housing.



## Dimensions



## Technical Data

Resistance @ 25 °C ..... 3 k $\Omega$   
Accuracy from nominal values ..... 5% (W/°C)  
..... @ -40 > +125 °C  
Maximum operating voltage ..... 5 V (series)  
Thread ..... M12 x 1.5  
Seal ..... 19mm Hex  
Weight ..... 26 g  
Connector ..... Mini – Timer 2 way  
Tightening torque ..... 24 Nm max

Temperature °C	Resistance k $\Omega$
-40	100.95
-30	53.10
-20	29.12
-10	16.60
0	9.75
10	5.97
20	3.75
25	3.00
30	2.42

Temperature °C	Resistance k $\Omega$
40	1.60
50	1.08
60	0.75
70	0.53
80	0.38
90	0.28
100	0.20
110	0.15
125	0.10

## Ordering information

Part No.	Connector	Description	Order Code
WTS05	2 way minitimer	Fluid temperature sensor - extended	215810021002

Competition Systems Ltd  
Hyjuniper, Long Lane  
Shaw, Berkshire,  
RG14 2TA  
England

For further details please contact

Tel: +44 (0)8707 444666  
Fax: +44 (0)8707 444888  
mail@competitionsystems.co.uk