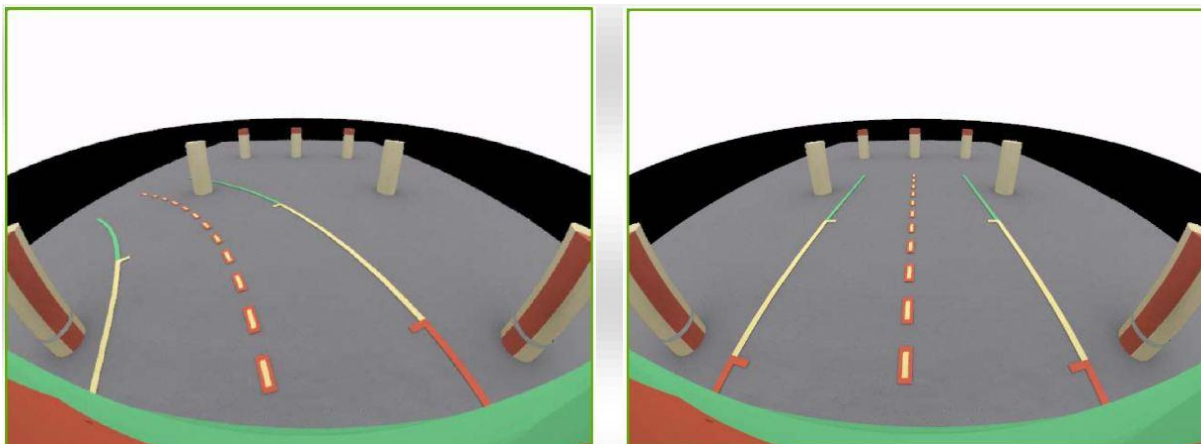


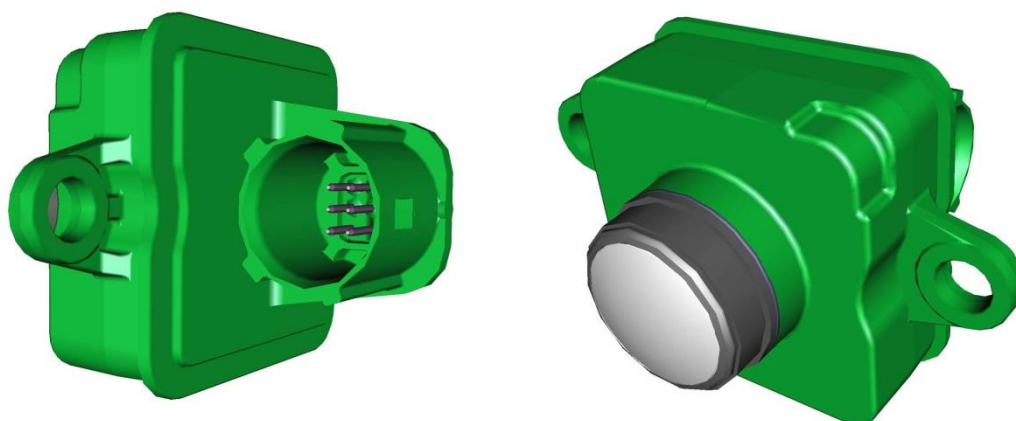


## Rear camera ParkView



On vehicles equipped with Uconnect 5.0 or 6.5 UConnect® touchscreen the image of the rear camera of the ParkView® system will appear on the radio display when reversing. The image is displayed with lines representing the space occupied by the car that are automatically adapted to the steering wheel rotation.

The rear camera, which is located on the tailgate, produces a high resolution image with greater clarity and sharpness to identify any obstacles.



Pin	Function	
1	Ground	
2	LIN	
3	Power supply	
4	N.C.	
5	Video - (NTSC Video negative output)	
6	Video + (NTSC Video positive output)	

The rear view camera (RVC) communicates with the BCM via LIN2.