

NUOVO DUCATO X250 2.2 JTD FUEL PRESSURE SENSOR ON FUEL MANIFOLD TO INJECTORS - R.R 1060G28

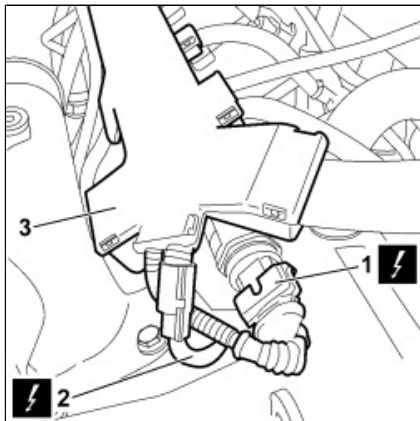


- Turn the ignition key to the OFF position.
- Disconnect the negative battery terminal.

	Description	Connector
-	BATTERY	See A001 BATTERY

Op. 5530B54 BATTERY COVER - R+R

1. Detach the pressure sensor electrical connection.

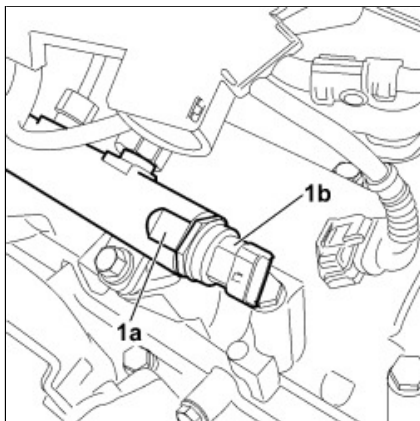


	Description	Connector
1	FUEL PRESSURE SENSOR	See K083 FUEL PRESSURE SENSOR

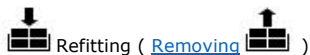
2. Detach the electrical connections for the first two spark plugs.

	Description	Connector
2	HEATER PLUGS	See A040 HEATER PLUGS

3. Release the electrical wiring from the single fuel manifold (common rail) and move it away from the work area.



1. Use a spanner for leverage on the single fuel manifold (common rail) (1a), then undo the pressure sensor (1b) and remove it.



- Screw in the pressure sensor and tighten it to the recommended torque.

Component	Fastening	dia	Value (daNm)	Val.

Fuel pressure sensor	-	-	7.0	2.3 JTD
				3.0 JTD

- Fit the electrical wiring on the single fuel manifold (common rail) and connect the electrical connections for the spark plugs, the throttle body and the pressure sensor.

	Description	Connector
-	HEATER PLUGS	See A040 HEATER PLUGS
	Description	Connector
-	FUEL PRESSURE SENSOR	See K083 FUEL PRESSURE SENSOR

- Connect the negative battery terminal.

	Description	Connector
-	BATTERY	See A001 BATTERY

Op. 5530B54 BATTERY COVER - R+R