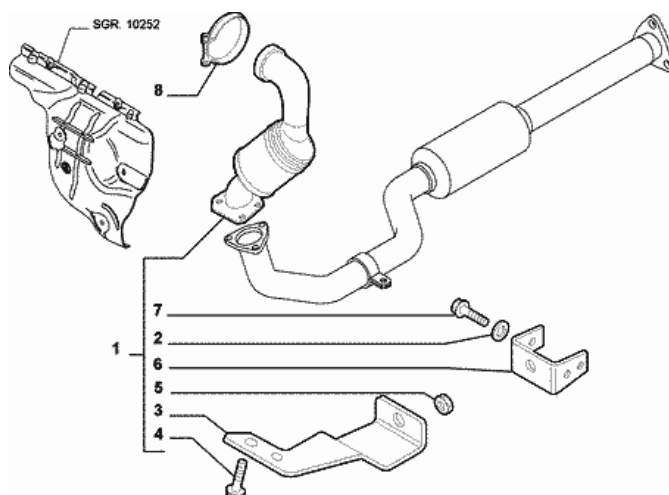


**Catalogue print**

<b>Catalogue:</b>	2T - CROMA (2005-....)
<b>Category:</b>	102 - FUEL END EXHAUST SYSTEMS
<b>Subcategory:</b>	10258/01 - EXHAUST PIPING
<b>Subgr. val.:</b>	M88 ,M92 ,M95
M88 - 1900 JTD 8V 120 CV/88KW; M92 - 1900 JTD 16V 150CV/110KW; M95 - 2400 JTD 20V 200CV/147KW;	



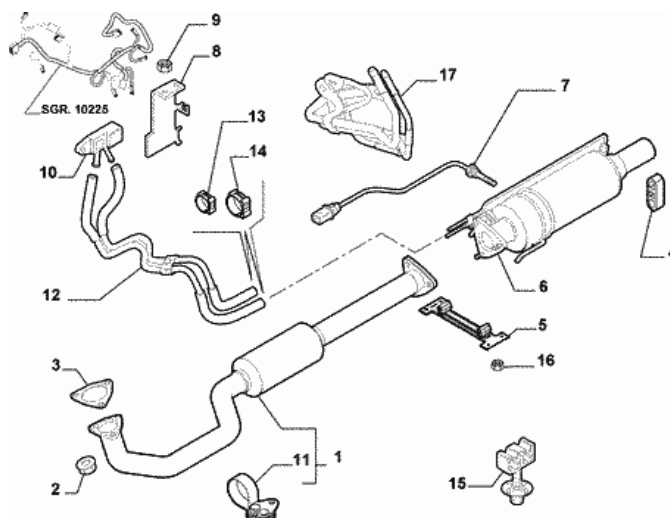
Prod. Code	Fur. descr.	Compatibility	Modif.	Qty	Notes	Col.	Recondit.
<b>1. PIPE</b>							
60802071		M88		01			
60802072		M92		01			
<b>1. SILENCER CATALIZED</b>							
55195359		M95		01			
<b>2. LOCK WASHER</b>							
11198179				01			
<b>3. BRACKET</b>							
55187587		M88 ,M92		01			
55189190		M95		01			
<b>4. SCREW</b>							
7795879				02			
<b>5. NUT</b>							
811900440				01			
<b>6. BRACKET</b>							
55187586		M88 ,M92		01			
55192413		M95		01			
<b>7. SCREW</b>							
811900183	M8X70			01			
<b>8. COLLAR</b>							
46816240				01			

**Explanation of codes used in this page**

M88 - 1900 JTD 8V 120 CV/88KW; M92 - 1900 JTD 16V 150CV/110KW; M95 - 2400 JTD 20V 200CV/147KW;

**Catalogue print**

<b>Catalogue:</b>	2T - CROMA (2005-....)
<b>Category:</b>	102 - FUEL END EXHAUST SYSTEMS
<b>Subcategory:</b>	10258/01 - EXHAUST PIPING
<b>Subgr. val.:</b>	M88 ,M92 ,M95
M88 - 1900 JTD 8V 120 CV/88KW; M92 - 1900 JTD 16V 150CV/110KW; M95 - 2400 JTD 20V 200CV/147KW;	



Prod. Code	Fur. descr.	Compatibility	Modif.	Qty	Notes	Col.	Recondit.
<b>1. PIPE</b>							
51767240		M88 ,M92		01			
51763273		M95		01			
<b>2. NUT</b>							
14119319				06			
<b>3. SEAL GASKET</b>							
51770353				01			
<b>4. PAD</b>							
51769176				02			
<b>5. BRACKET</b>							
51767241				01			
<b>6. ANTIPARTICUL.FILT.</b>							
51767238				01			71787398
<b>7. SENSOR</b>							
55200036				01			
<b>8. BRACKET</b>							
51755495		GS		01			
51755498		GD		01			
<b>9. NUT</b>							
14040611				02			
<b>10. SENSOR</b>							
55200301				01			
<b>11. PIPE</b>							
51763275		M88 ,M92		01			
51752098		M95		01			
<b>12. SENDING UNIT</b>							
51755497		GS		01			
51762145		GD		01			
<b>13. COLLAR</b>							

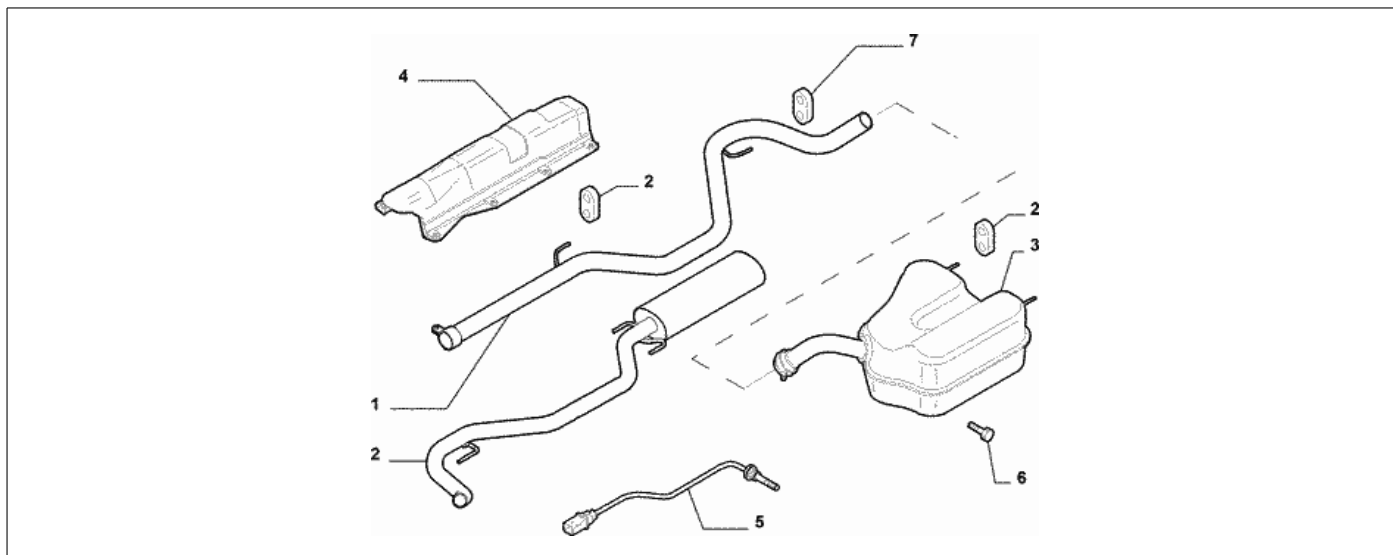
Prod. Code	Fur. descr.	Compatibility	Modif.	Qty	Notes	Col.	Recondit.
<b>13127170</b>				<b>02</b>			
<b>14. COLLAR</b>							
<b>13125470</b>				<b>02</b>			
<b>15. CLIP</b>							
<b>51755502</b>				<b>01</b>			
<b>16. NUT</b>							
<b>46835743</b>		<b>133</b>		<b>02</b>			
<b>17. PIPE</b>							
<b>51762144</b>		<b>133</b>		<b>01</b>			

**Explanation of codes used in this page**

GD - RIGHT HAND DRIVE; GS - LEFT HAND DRIVE; M88 - 1900 JTD 8V 120 CV/88KW; M92 - 1900 JTD 16V 150CV/110KW; M95 - 2400 JTD 20V 200CV/147KW; 133 - AUTOMATISM  
ADDITIONAL AUTOMATIC HEATER;

**Catalogue print**

<b>Catalogue:</b>	2T - CROMA (2005-....)
<b>Category:</b>	102 - FUEL END EXHAUST SYSTEMS
<b>Subcategory:</b>	10258/01 - EXHAUST PIPING
<b>Subgr. val.:</b>	M88 ,M92 ,M95
M88 - 1900 JTD 8V 120 CV/88KW; M92 - 1900 JTD 16V 150CV/110KW; M95 - 2400 JTD 20V 200CV/147KW;	



Prod. Code	Fur. descr.	Compatibility	Modif.	Qty	Notes	Col.	Recondit.
<b>1. PIPE</b>							
51759665		M88 ,M92		01			
<b>2. AUXILIARY SILENCER</b>							
51759666		M95		01			
<b>3. SILENCER</b>							
73502843				01			
<b>4. PROTECTION</b>							
55182488				01			
<b>5. SENSOR</b>							
55200037				01			
<b>6. SCREW</b>							
811900186				01			
<b>7. PAD</b>							
73502846				07			

**Explanation of codes used in this page**

M88 - 1900 JTD 8V 120 CV/88KW; M92 - 1900 JTD 16V 150CV/110KW; M95 - 2400 JTD 20V 200CV/147KW;