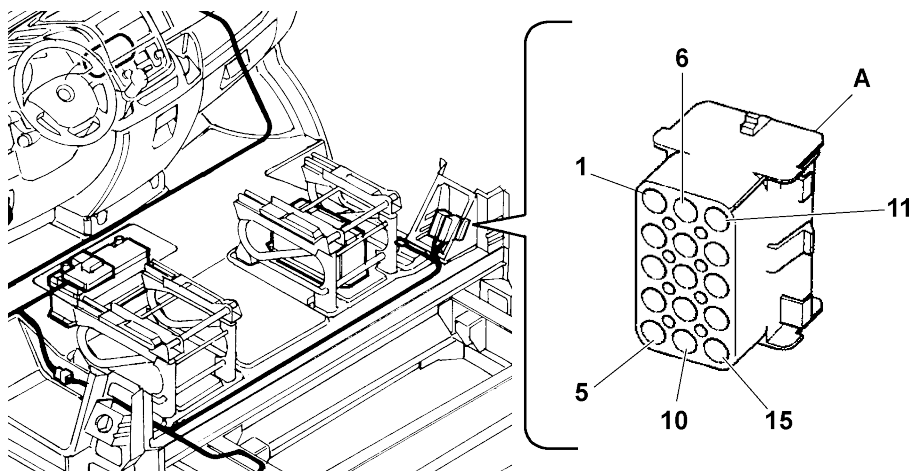


Opt socket for body-makers (Opt 081)

This prearrangement allows body-makers to connect accessories and specific devices for the vehicle's electrical system without altering operation.

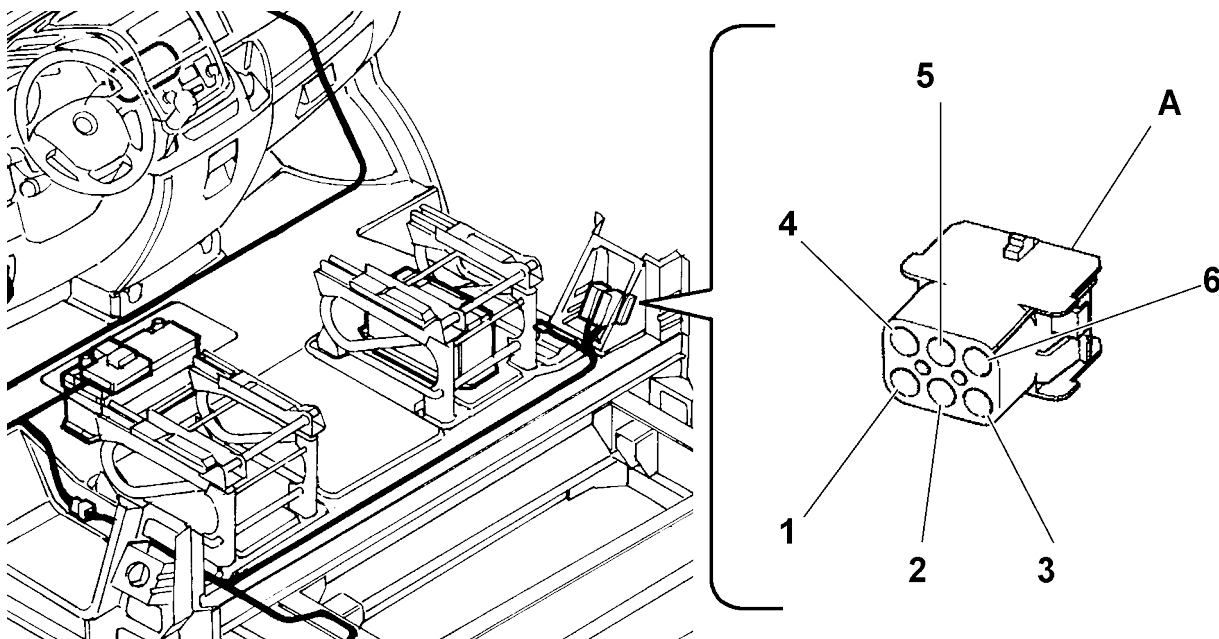


| Pin | Function/Part number Connector | m cable cross-section | cable colour | Notes |
|-----|--|-----------------------|--------------|---|
| | Tyco 15-way connector p/n 0-926647-1 Counterpart: Tyco p/n 1-480710-0 (by the body-maker) | | | Reference on diagram C036-L1A |
| 1 | Supplementary brake light | 0,5 | B | $P_{MAX} = 21W$ at 12V (to use as an alternative to the one on Y203L4A) |
| 2 | D+ (active to ground) | 0,5 | MB | $I_{MAX} = 300mA$ (1 relay coil FIAT Auto standard) |
| 3 | Vehicle speed repetition (VSO) | 0,5 | GR | $I_{MAX} = 5mA$ (see Figure 27) |
| 4 | Lock command | 1,5 | RN | $I_{MAX} = 12A$ (For the actuation times see Table 1) |
| 5 | Unlock command | 1,5 | NR | $I_{MAX} = 12A$ (For the actuation times see Table 1) |
| 6 | Lateral and rear door status signal | 0,5 | NZ | Use a normally open (N.O.) switch to ground (minimum clean contact current 10 mA) |
| 7 | Driver 20W SBMT timed power supply for ceiling lights | 0,5 | RV | Ceiling light timed power supply (+) for 15 min. with key off ($P_{MAX} = 20W$ at 12V) |
| 8 | Ceiling light negative command (dimmered) | 0,5 | BV | Ceiling light command (-) $P_{MAX} = 20W$ at 12V |
| 9 | B-CAN Low | 0,35 | BS | Prearrangement for FIAT Auto accessories line anti-theft ⁽¹⁾ |
| 10 | B-CAN High | 0,35 | NS | Prearrangement for FIAT Auto accessories line anti-theft ⁽¹⁾ |
| 11 | Relay negative command for side parking lights (sidemarker) | 0,5 | Z | $I_{MAX} = 300 mA$ (1 relay coil FIAT Auto standard) |
| 12 | A/C request | 0,5 | GV | Air-conditioning cut-in positive signal $I_{MAX} = 300 mA$ (1 relay coil FIAT Auto standard) |



| | | | | |
|----|---------------------------------|-----|---|---|
| 13 | Power supply with key on (+KEY) | 0,5 | L | I _{max} =600 mA (2 relay coils FIAT Auto standard) |
| 14 | Supplementary heater command. | - | - | I _{MAX} = 300 mA (1 relay coil FIAT Auto standard) |
| 15 | Not connected | - | - | - |

Prearrangement for rear speakers



| Pin | Function/Part number Connector | cable cross-section | cable colour | Notes |
|-----|---|---------------------|--------------|--|
| | Tyco 6-way connector p/n 1-480705-0 Counterpart: Tyco p/n 1-480704-0 (by the body-maker) | | | Reference on diagram C036-L1B |
| 1 | Permanent 12V power supply (+30) for car radio | 1,5 | RG | Auxiliary battery permanent power supply to car radio cable only present from C036-L1A to Y028L1A ⁽¹⁾ |
| 2 | Rear speaker LH + | 1 | V | |
| 3 | Rear speaker LH - | 1 | VN | |
| 4 | Rear speaker RH + | 1 | HN | |
| 5 | Rear speaker RH - | 1 | H | |
| 6 | Not connected | - | | |

